



Home of the
World Renowned
Mayo Mattress
Range

THE MAYO STABLE MATTRESS RANGE

SUPER **SOFT** SUPER **STRONG** SUPER **LIGHTWEIGHT** SUPER **HYGIENIC**



INFORMATION & FITTING INSTRUCTIONS

www.mayohorsecomfort.co.uk

What is it made of?

- The Entire Mayo Range of stable matting is made from a **closed cell foam** called **EVA** (Ethylene Vinyl Acetate) - **NOT RUBBER**.
- EVA is far **lighter** and **more durable** than rubber when **pure** (devoid of inert fillers).
- Rubber mats will scientifically **harden** & **wear away** over time. **PURE EVA** is therefore, a far better material for use in an animal bed than rubber.
- Mayo formulation EVA (pure) is aerated during manufacture to give Mayo Mats their **incredible comfort**. This cushioning is permanent.
- Mayo Range EVA Stable Mats are **far superior to any rubber alternative** due to their **durability** and **comfort** in comparison to traditional rubber stable mats.



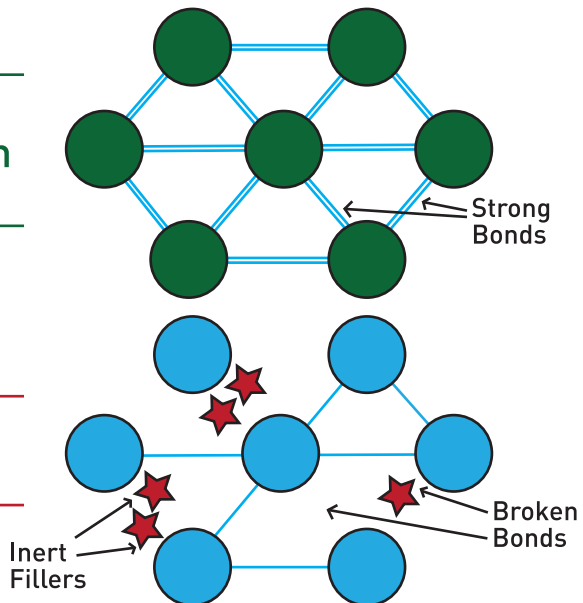
Cathy Wood's stallion enjoying Mayo Mattresses in Devon.

Mayo Formulation EVA

- The Mayo Range of stable mats is **completely devoid of inert fillers** (chopped rubber, sand, other synthetic materials).
- **Inert fillers** will compromise the durability of an EVA mat as they weaken the bonds and cause them to spread asunder or disintegrate alarmingly quickly.
- The Mayo Range of EVA stable matting is the **only range** on the market **completely devoid** of any inert fillers.
- Other “EVA” mats are therefore less durable - they are **EVA composites**, not 100% EVA like Mayo Mats.
- The Mayo Range of EVA stable matting is made from **Mayo Formulation EVA** - the **highest grade** EVA mat on the market.

Mayo
Formulation
EVA

EVA
Composite



The Mayo Range Key Attributes

- Extremely **lightweight** unlike heavy rubber (3-6 times lighter!).
- Labour and bedding **cost-savings** vs. rubber mat maintenance and replacement.
- The range will, in time, pay for itself through reduced loose bedding requirements.
- The entire range **provides actual cushioning** vs. concrete covering with rubber.
- Mayo is the only range you can **safely reduce** the amount of bedding you are using.
- Very high shock absorbency - the **ultimate in comfort**.
- 100% non-absorbent - the **ultimate in hygiene**.
- Will **NEVER** harden and perish like traditional rubber.
- **Quality** guaranteed with the Mayo name.
- Will **NOT** pit, hollow, rip or tear like traditional rubber.

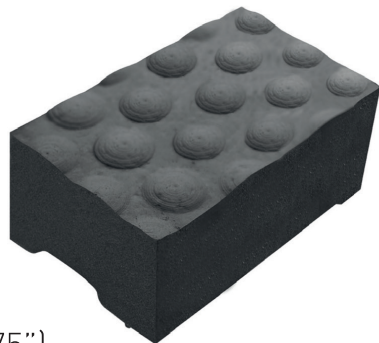


Philip Kirby Race Horse Stables
- Yorkshire

At a glance...

The Mayo Mattress

The ultimate product for comfort leading in the dairy market and is unrivalled in the equine market.



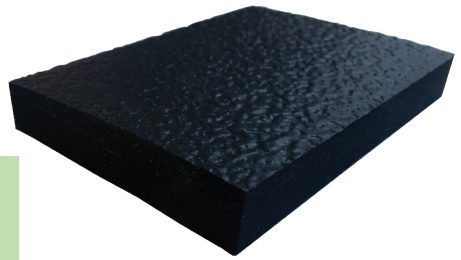
- Size: 1220 x 1829 x 44mm (4' x 6' x 1.75").
- Only **13.5kg**.
- 10 year guarantee with a 15+ year life expectancy.
- **THIS IS A BED**. Regardless of the size of the horse - the Mayo Mattress is all you need for their comfort and warmth.
- Safely, **dramatically** reduce the amount of loose bedding needed - only a smattering to absorb moisture is required!
- This is the **next generation in stable bedding** - the Mayo Mattress will pay for itself and then **earn** its keep in loose bedding savings.
- Can **NEVER** collapse or go hard.
- Supremely comfortable - twice as thick and almost twice as soft as the Mayo Original.
- Excellent insulation and shock absorbency - perfect relief for a laminitic horse.
- 100% non-absorbent - making it extremely hygienic.
- Mayo formulation EVA devoid of any inert fillers.
- A proven trust in the name **Mayo** - Quality Guaranteed.

**THE MAYO MATTRESS IS
THE ONLY BED YOU NEED FOR YOUR
HORSE'S COMPLETE COMFORT**

At a glance...

The Mayo Original

Initially developed for the dairy market - the most successful cubicle mat ever made.



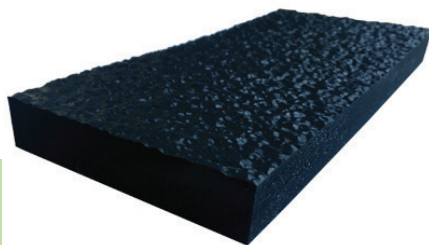
- Size: 1220 x 1829 x 24mm (4' x 6' x .99").
- Only **12kg**.
- 10 year guarantee with a 25+ year life expectancy.
- Far superior comfort vs traditional rubber.
- Will **fully function** for **at least** 6 times as long as a rubber alternative. Functionality is key here - they will **work** for **their life!**
- Large horse, race horse or "highly spirited" horse owners tend to opt for the Original due to the incredible durability of the product.
- Loose bedding savings - this is a cushion not just a mat!
- Can **NEVER** collapse or go hard.
- Excellent insulation and shock absorbency - perfect relief for a laminitic horse.
- 100% non-absorbent - making it extremely hygienic.
- Mayo formulation EVA devoid of any inert fillers.
- A proven trust in the name **Mayo** - Quality Guaranteed.

INCREDIBLY DURABLE SOFTNESS

At a glance...

The Mayo Eco Mat

Less material used to make as horses are less severe on the mats vs. cows - even with shoes!



- Size: 1220 x 1829 x 20mm (4' x 6' x .78").
- Only **7kg!!!** You could carry 2 or 3 at a time!
- 10+ year life expectancy.
- Provides actual cushioning vs. the ZERO cushioning rubber provides.
- Will **fully function at least** twice as long as a rubber alternative.
- Unbelievable performance for such a lightweight mat. The Eco Mat brings all the benefits of Mayo to your stable at a price comparable to traditional rubber.
- Loose bedding savings - this is a cushion not just a mat!
- Can **NEVER** collapse or go hard.
- Excellent insulation and shock absorbency.
- 100% non-absorbent - making it extremely hygienic.
- Mayo formulation EVA devoid of any inert fillers.
- A proven trust in the name **Mayo** - Quality Guaranteed.

ECONOMICAL COMFORT FOR YOUR HORSE

FITTING INSTRUCTIONS



To ensure many years of trouble free horse comfort in your stables, please follow these instructions...

- The diagrams are based on a 12'x11' stable and the pictures show a 18'x13' stable. The method is applied to all sizes.
- The aim is to have a **1" gap around the perimeter** with the largest sections laid from the door inwards - SIMPLE!
- If in any doubt, please call us on 01704 821717 and we will be happy to help.



Tools needed (pic 1)

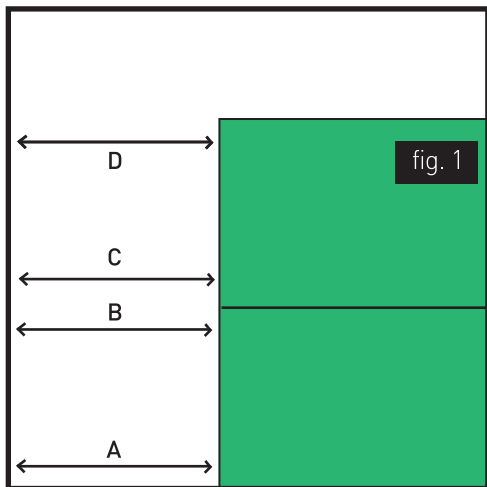
1. Straight edge to cut a straight line
2. Sharp Stanley knife
3. Measuring tape
4. Chalk to mark the mat



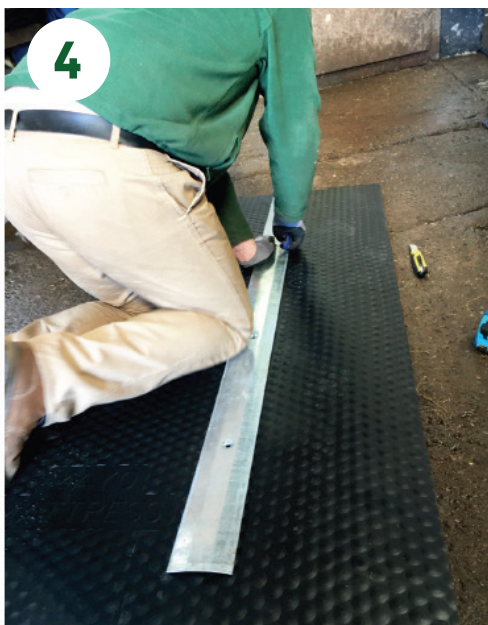
Laying the mats (pic 2)

Start from the door and lay as many full mats as you can

FITTING INSTRUCTIONS



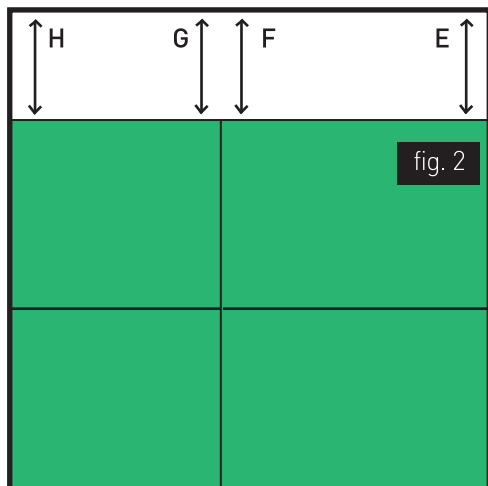
- ★ Push mats tight to the wall and doorway (fig.1).
- ★ Take measurements A, B, C and D from the end of the mats to the adjacent wall (fig.1 & pic 3).
- ★ Deduct 50mm (2 inches) from the measurements you have just taken and cut the mats to that length.
(A -2", B -2", C -2", D -2")
(Pic. 4 & 5)



Measure the distance from the wall to the closest full mat.

Cut to size.

FITTING INSTRUCTIONS



★ Take measurements E, F, G and H from the edge of the mats to the opposite wall. (fig. 2).

★ Deduct 50mm (2 inches) from this size and cut mats to suit. (E -2", F -2", G -2", H -2")

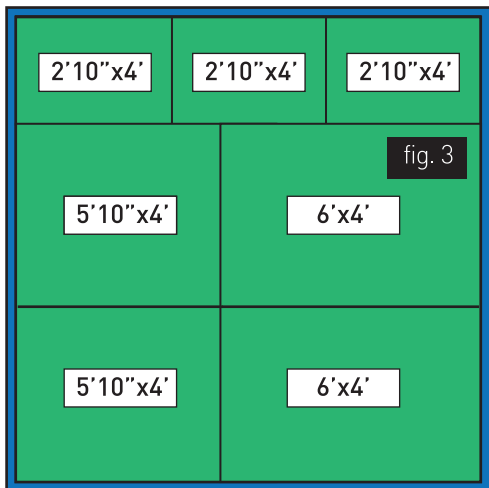


Cut to size.



Lever mats away from the wall to leave your 1" gap.

FITTING INSTRUCTIONS



1 INCH GAP ALL THE WAY AROUND

★ Lever the mats away from the walls, so that a 25mm (1 inch) gap is left all the way around (fig. 3).

★ Size & position of sections in diagrams are sized for a 11' x 12' stable.

It may be necessary to re-trim mats once more after they settle in.



1" around perimeter.



1" around perimeter.

Differentiation

The Mayo Original

- The most durable mat in the range.
- Only 12kg (4 times lighter than a 17mm rubber mat).
- Will fully function at least 6 times as long as a 17mm rubber mat - well over 25 years in a stable.
- Plain - no markings.
- Popular for people with larger or very “spirited” / lively horses. Very popular with race horse trainers - incredibly durable.
- 24mm thick.

The Mayo Eco Mat

- The only equine specific mat in the range.
- Only 7kg (over 6 times lighter than a 17mm rubber mat).
- Will fully function at least 2 times as long as a 17mm rubber mat - well over 10 years in a stable.
- “Eco Comfort Mayo Mat” stamped on the product.
- Similar price to 17mm rubber mat but with extraordinary extra value → provides actual cushioning, therefore comfort → far greater durability and only 7kg vs 45kg!!
- 20mm thick.

Differentiation

The Mayo Mattress

- The ultimate animal bed in comfort and luxury
- ZERO loose bedding required from a comfort or warmth perspective.
- Only 13.5kg (over 3 times lighter than a 17mm rubber mat).
- Will fully function at least 3 times longer than a 17mm rubber mat - well over 15 years in a stable.
- "The Mayo Mattress" stamped on the product with comfort circle cushion pattern on top. Round plates to the underside to aid drainage.
- No better synthetic animal bed available on the market worldwide. If you are looking for the best, you are looking for the Mayo Mattress.
- 44mm thick.

"The Mayo Mattress is perfect for equine use. After wasting money on cheaper mats, I was unsure of what matting to go for. I chose the Mayo Mattress, it is as luxurious as it sounds, lightweight and easy to install. You don't actually need a lot of shavings/straw, if any, as the Mattress is so supportive. I certainly will be reducing the amount of shavings I use. Highly recommended for equine use." [Lynne Grimmant](#)



MAYO RANGE FAQ



Q: Can I use Mayo Mats outdoors?

A: The Mayo range is designed for indoor use. If a field shelter has a smooth hard base and is fully enclosed on at least 3 sides the Mayo Mats may be used. They are not for use loose outdoors as direct sunlight for long periods of time will cause them to curl.

Q: Can I use cow mats for my horse?

A: Absolutely. Cows and horses are both pasture animals and therefore have the same requirement from a bed - comfort, warmth, hygiene and durability.

Q: Is there a difference with Mayo cow & horse mats?

A: The only equine specific mat in the range is the Mayo Eco Mat which uses less material as horses are far less severe on mats than cows. There is no difference in quality or performance of the product for the Mayo Original or Mayo Mattress.

Q: How are horses less severe on the mats than cow?

A: Cows are very heavy and have cloven hooves as opposed to a horses rounded one. Because of the shape of the cows hoof, they put incredible pressure on a very small area. The shape of a horse's hoof spreads its weight over a greater area which reduces the pressure on the mat.

Q: Will my horse's shoes damage the mat?

A: No - the Mayo range of matting is far more durable than rubber and a horse's shoes will cause no issues. Road studs may pock the mats.

Q: Why do the mats differ so much in price?

A: The Mayo Original is made with almost twice the material at the Mayo Eco. Initially designed for cows the Original is the most successful cubicle mat ever made. Its incredible durability coupled with comfort and hygiene makes it perfect for a large or spirited horse - it is leagues ahead of any rubber alternative.

MAYO REVIEWS



"I am so impressed with my Mayo Mats! I own a 17hh fine TBxID so when buying mats his comfort was the main priority as he likes to lie down. The Mayo Mattress ticked all these boxes and Harry now sleeps like a baby on them. Even better, I don't have to use a deep bed of shavings anymore so Mayo Mats have allowed me to save lots of pennies! They are also incredibly lightweight, so are very easy to manoeuvre by yourself and they never smell and are easily washed clean!" - Sarah Penney

"We have been using Mayo mats for over five years now. They are in stables that are used 24/7 and we use a small amount of bedding - straw/shavings and paper. They are very lightweight and easy to move to clean under. We even take them with us when we go to away shows as they fit easily in to the horse box making it home from home for the horses!" - Bowlers Riding School

"Delighted with my mats. The swollen hock has gone down and the bed is drier but with significantly less straw. We're probably using more straw than we need to. Quite straightforward to fit." - Kate Hargreaves

"I bought a set of 6 Mayo Mats 18 years ago. They are still as good as the day I got them and are used daily. I love them as they are lightweight compared to rubber mats and I can move them on my own. Even being lightweight they stay in place. We have many elderly horses here and I never have to worry about them laying down as the mats are so thick and comfortable" - Tracy Keegan

"Happy antique pony with his new Mayo Mattresses, reduced swelling in legs already and overall a happier pony. Not to forget - still delighted with the 20yr old mats too, loved by sheep, horses, dogs and chickens" - Sophie Church





Available from:

Fritsch Equipment Corp.

6229 Hwy 57, De Pere, WI 54115

(920) 532-6292

www.fritschequipment.com



@mayohorsecomfort

More information can be found at
mayohorsecomfort.co.uk